

SID RICHARDSON CARBON CO.

3560 West Market St.

Akron, Ohio 44333

ORDERS 800-767-2227

TELEPHONE 330-666-2777

FAX 330-666-3015

Prices Effective January 1, 2007

January 24, 2007

Price Per Pound – F.O.B. SRCC Plant					
Grade	Shipping Point *	Bulk/Lb. Price	Grade	Shipping Point*	Bulk/Lb. Price
N110	G	1.1389	N339	A,B,G	0.8689
N120	B	1.1089	N347	A	0.8539
N121	G	1.1339	N351	B	0.8539
N134	B	1.2364	N358	G	0.8789
N220	B,G	0.9564	N550	G	0.7464
N231	B	0.9939	N650	G	0.7264
N234	A,B	1.0189	N660	A,G	0.7139
N299	A,B,G	0.9064	N762	G	0.7139
N326	G	0.8114	N772	G	0.7139
N330	A,B,G	0.8089	N774	G	0.7139

Specialty Blacks – Price Per Pound – F.O.B. SRCC Plant					
Grade	Shipping Point *	Bulk/Lb. Price	Grade	Shipping Point*	Bulk/Lb. Price
SR155	A	1.3039	SR511	G	0.9464
SR301	G	0.8639	SR530	G	0.7964
SR303	G	0.8614	SR630	G	0.7764
SR310	G	0.8114	SR730	G	0.7639
SR401	G	0.8989			

* A = Addis, LA B = Big Spring, TX G = Borger, TX

- The above prices are subject to SRCC's standard terms of sale.
- SRCC reserves the right to charge a late fee of 1.5 percent per month on total overdue amounts.
- Constructively placed hopper cars held for more than 20 days are subject to a \$50 per day demurrage charge.
- Payment Terms: Net 30 days

Upcharges

\$.0225 per pound for 65 c.f. intermediate bulk containers
 \$.0325 per pound for 45 c.f. intermediate bulk containers
 \$.0400 per pound for 45 c.f. intermediate bulk containers with liner
 \$.0425 per pound for paper bags
 \$.0450 per pound for poly bags
 \$.0200 per pound for 50-pound cardboard cartons
 \$.1000 per pound to bag price for warehouse shipments
 \$.0120 per pound for telescopic cartons
 \$.4000 per loaded mile hopper car usage fee
 Purchases less than a full skid carry a \$50.00 per invoice upcharge

SID RICHARDSON CARBON & ENERGY CO.
3560 West Market St.
Akron, Ohio 44333

ORDERS 800-767-2227

TELEPHONE 330-666-2777

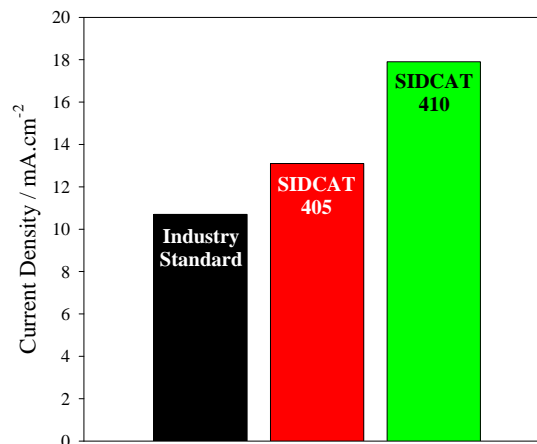
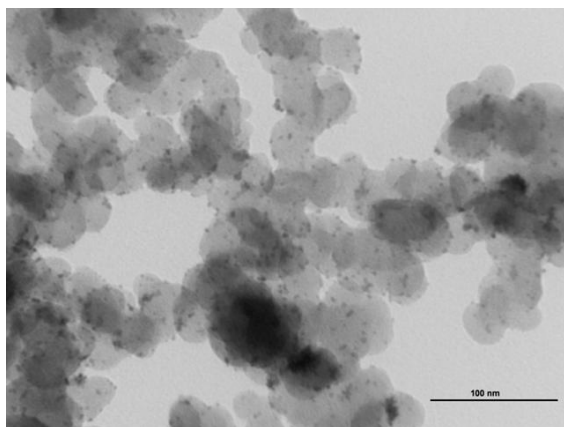
FAX 330-666-3015

Prices Effective June 1, 2007

<u>Name</u>	<u>Description</u>	<u>Qty.</u>	<u>Price</u>
SIDCAT 405	5% Platinum on FC 400	1g	\$ 19.50
SIDCAT 410	10% Platinum on FC 400	1g	\$ 27.50
FC 400	Carbon Black for Fuel Cell Applications.	250g	\$ 15.50
SIDCAT Custom	Customer specified, variable % Platinum on FC 400.	5g	Call for Quote

Minimum 5g purchase.

SIDCAT was developed as an improved catalytic support and novel electrocatalyst that demonstrates superior current densities and corrosion resistance in proton exchange membrane fuel cell (PEMFC) applications.



SID RICHARDSON CARBON & ENERGY CO.

Fort Worth Research Center
4825 N. Freeway
Fort Worth, TX 76106

Test Prices

Prices Effective June 2004

Analytical Testing for Physicochemical Properties

<u>ASTM Ref.</u>	<u>Test Method Description</u>	<u>Price</u>
D 1618	% Toluene Extractables	\$150
D 4004	Analysis by AA, Atomic Absorption	\$200
D 1506-B	Ash by Microwave Oven	\$90
D 1506-A	Ash by Muffle Furnace	\$90
D 6086	CVI, Compressed Volume Index	\$150
D 1817	Density or Specific Gravity	\$90
D 4571	Determination of Volatile Content of Rubber Chemicals	\$120
D 1508	Fines Content of Pelleted Carbon Black	\$115
D 1509-B	Heating Loss by Moisture Balance	\$90
D 1509-A	Heating Loss by Oven Method	\$110
D 1510	Iodine Adsorption Number of Carbon Black	\$200
	Iron Content of Carbon Black (Wet Method)	\$150
D 1937	Mass Strength of Pelleted Carbon Black	\$120
D 6556	N2SA / STSA	\$230
D 3493	Oil Absorption Number of 24M4 Compressed Carbon Black	\$125
D 2414	Oil Absorption Number of Carbon Black	\$100
D 3313	Pellet Hardness – Sweigart Method (Manual)	\$150
D 5230	Pellet Hardness – Titan Method (Automatic)	\$125
D 1511	Pellet Size Distribution of Carbon Black	\$125
D 1512	pH Value of Carbon Black	\$90
D 1513	Pour Density of Pelleted Carbon Black	\$115
D 1514	Sieve Residue of Carbon Black	\$185
D 1619	Sulfur Content of Carbon Black By XRF	\$140
D 3265	Tint Strength of Carbon Black	\$150

Microscopy Services

<u>ASTM Ref.</u>	<u>Test Method Description</u>	<u>Price</u>
	Elemental Analysis by EDX	\$150/Hr
	MSM, Mechanical Scanning Microscopy	\$150
	Optical Microscopy	\$90/Hr
	SEM, Scanning Electron Microscopy	\$300/Hr
	TEM, Transmission Electron Microscopy	\$300/Hr

SID RICHARDSON CARBON & ENERGY CO.

Fort Worth Research Center

4825 N. Freeway

Fort Worth, TX 76106

Test Prices

Prices Effective June 2004

Rubber Property Testing

<u>ASTM Ref.</u>	<u>Test Method Description</u>	<u>Price</u>
	Angle Abrasion Index, AAI	\$145
D 3182	Banbury/Mill Mixing	\$150/Hr
	Compounding	\$70/Hr
D 395	Compression Set, Method B	\$90
	Curing	\$100/Hr
D 297-16	Density	\$50
D 2230	Die Swell	\$65
D 2240	Durometer Hardness, Type A	\$50
D 5992	Dynamic Viscoelasticity Testing (G', G'', Tan d)	\$150
	Friction Testing	\$150
D 1646	Mooney Viscosity & Scorch	\$50
D 5289	Moving Die Rheometry, MDR	\$50
D 1054	Rebound Resistance, Goodyear-Healy	\$75
D 413	Rubber/Cloth Adhesion Test	\$100
D 429	Rubber/Metal Adhesion Test	\$200
D 624	Tear Energy – Molded Groove Geometry	\$125
	Tear Energy – Peel Adhesion Test	\$125
	Tear Energy – Pure Shear Geometry	\$125
D 412	Tensile Properties of Elastomers	\$65

Other Testing

<u>ASTM Ref.</u>	<u>Test Method Description</u>	<u>Price</u>
	Acoustic Attenuation Coefficient – 1 MHz (25°C)	\$250
	Acoustic Attenuation Coefficient – 1 MHz (-60°C to +60°C)	\$350
	Acoustic Sound Velocity – 1 MHz (25°C)	\$250
	Carbon Black Typing (TGA, Pyrolysis, N2SA, CVI, TEM)	\$1,000
	Digital Photography (Included With Microscopy)	\$15
D 1519	DSC, Differential Scanning Calorimetry	\$165
D 6370	TGA, Thermogravimetric Analysis	\$165
D 991	Volume Resistivity, DC – Cured Rubber, Plastics	\$250
D 991	Volume Resistivity, DC – Powder Samples	\$250
D 991	Volume Resistivity, DC – Uncured Rubber	\$250